

WHAT ASSESSMENTS WILL BE REQUIRED?

Both projects are currently in their scoping phase, prior to lodgment of two separate scoping reports with the NSW Department of Planning, Industry and Environment (DPIE). It is anticipated that these would be lodged in the second quarter (Q2) of 2021. On reviewing the scoping documents, DPIE will provide their project specific assessment requirements (SEARs), and preparation of two detailed Environmental Impact Statements (EIS) will commence. Both projects would be assessed under the State Significant Development planning process, an outline of which is presented in **Figure 2**.

As part of this process, RES has recently appointed Umwelt Environmental and Social Consultants, to commence a number of social and environmental assessment studies to inform the scoping phase, including a Social Impact Assessment (SIA). Other studies to be undertaken through the EIS processes for the projects include:

- Noise
- Visual
- Biodiversity
- Heritage
- Water
- Traffic
- Social and Community
- Soils
- Land Use
- Hazard and Risk
- Cumulative impacts

The detailed design and feasibility of each Project will be informed by the outcomes of these studies, to ensure that negative impacts are identified, addressed and appropriately mitigated, and that the positive impacts and benefits of the Projects are enhanced and maximised.

It is anticipated that should the Projects move to the next phase of the planning process, the EIS and SIA for Tallawang Solar Farm Project would be lodged in the third quarter (Q3) of 2021. The EIS and SIA for Barneys Reef Wind Farm Project is intended to be lodged in the fourth quarter (Q4) of 2021.

The SIA for both Tallawang Solar Farm and Barneys Reef Wind Farm will include a comprehensive community engagement program, prepared in accordance with the NSW DPIE's new draft SIA guideline (2020). Given their proximity to each other and the overlapping stakeholders, the engagement program will be conducted concurrently for both Projects. This program will provide opportunities for those with an interest in the project to present their views and will assist RES in obtaining an understanding of local community values, needs, aspirations and impacts associated with the Projects.

HOW CAN I BE INVOLVED?

RES, together with members of the Umwelt team, will be contacting relevant local and state government agencies, local landholders, local businesses, service providers, and community group representatives as part of the scoping phase, to better understand community views and perspectives. Outcomes of this scoping phase engagement will be summarised and shared with the community in a second Project Information Sheet and will be available on the website. Once complete, community members will have further opportunity to view the outcomes of the assessment studies, and have input to planning and development as the Projects progress. We value your input, so if you would like to receive further information on both or either of the projects and/or would like to make a time to meet with members of the respective project teams, please contact us on the details below.

We look forward to your participation and involvement.

FURTHER INFORMATION

- Free phone number: **1800 118 737**
- Barneys Reef Wind Farm Project:**
www.barneysreef-renewableenergy.com
- Tallawang Solar Farm Project:**
www.tallawang-renewableenergy.com

If you would like to have your say, to get involved in community engagement activities, or just want to know more about the Projects please contact RES using the contact details below.

Chris Gosling
Senior Project Development Manager
RES Australia Pty Limited

Email: info@barneysreef-renewableenergy.com
info@tallawang-renewableenergy.com

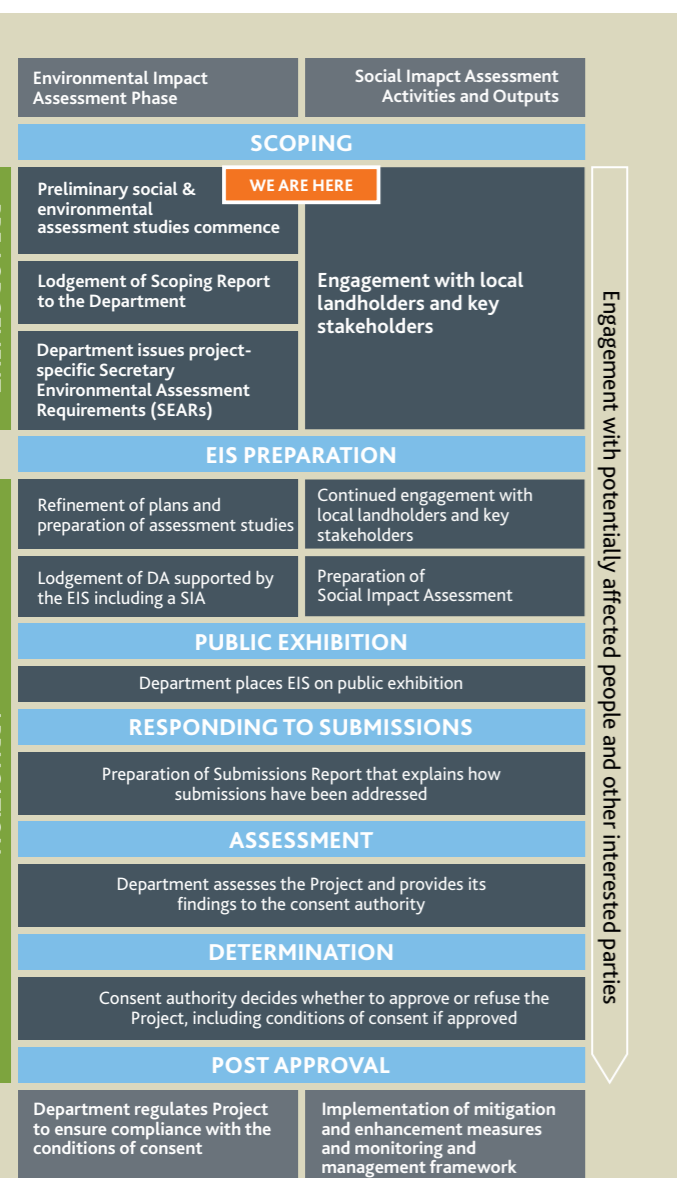


FIGURE 2: Phases of environmental impact assessment and key social impact assessment activities and outputs



Tallawang Solar Farm and Barneys Reef Wind Farm

Information Sheet No.1
APRIL 2021

INTRODUCTION

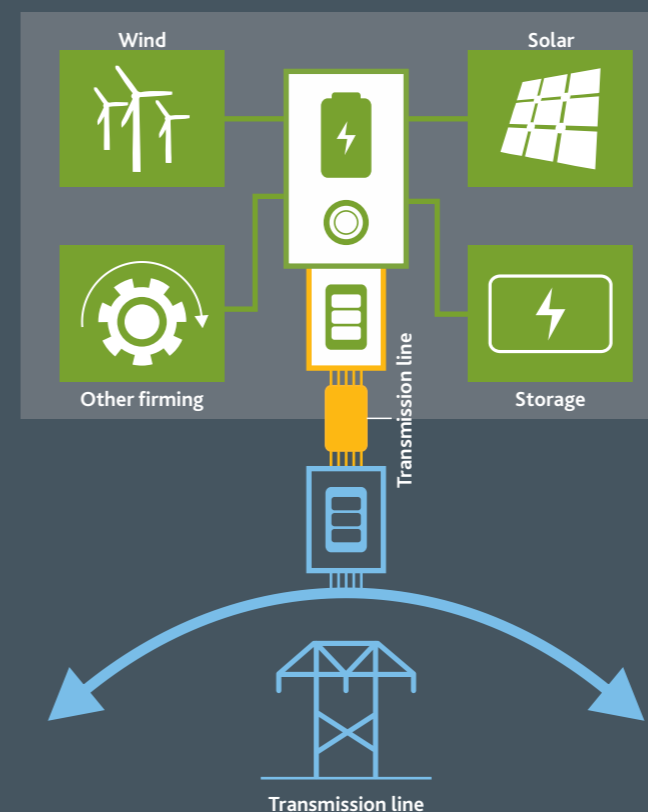
This Information Sheet introduces two renewable energy projects proposed in the Central West region of NSW by RES Australia - Tallawang Solar Farm Project and Barneys Reef Wind Farm Project (referred to as the Projects).

The Projects are located adjacent to each other, within the Mid-West Regional Council area, which is located within the Central-West Orana Renewable Energy Zone (REZ). This zone is one of a number of renewable energy zones across NSW that are anticipated to play a vital role in delivering affordable, reliable energy generation to help replace the State's existing power stations as they come to their scheduled end of life. Other zones are located in the New England, South-West, Hunter-Central Coast and Illawarra regions.

RES is currently assessing the feasibility of both Tallawang Solar Farm Project and Barneys Reef Wind Farm Project, and is undertaking some preliminary environmental studies. As part of this, RES is seeking feedback on the Projects from key stakeholders and local community members.

The Central-West Orana, New England, and South-West REZs, in particular, are anticipated to open up a significant pipeline of large-scale renewable energy projects that will support private investment and provide flow on economic benefits to communities in these regions.

Source: NSW Government;
<https://energy.nsw.gov.au/renewables/renewable-energy-zone>



WHO IS RES?

RES Australia (RES) is the world's largest independent renewable energy company active in both onshore and offshore wind, solar, energy storage and transmission and distribution.

A family-owned business at the forefront of the industry for nearly 40 years, RES has delivered over 20GW of renewable energy projects across the globe and supports an operational asset portfolio of 7GW worldwide.

Since 2004, RES has a proud history of working with communities to develop projects in Australia, including the Taralga Wind Farm (NSW), Ararat Wind Farm (VIC), Murra Warra Wind Farm stage 1 and 2 (VIC), Emerald Solar Farm (QLD), the construction and asset management of the Lal Lal Wind Farm (VIC), and the Columboola Solar Farm (QLD). Currently the construction and asset management portfolio under management by RES in Australia is over 1.1GW.

To achieve positive local and regional community outcomes, RES is committed to building strong relationships with key stakeholders and local communities. At the early development stage, emphasis is put on encouraging local participation and community input.



TALLAWANG SOLAR FARM

The proposed Tallawang Solar Farm comprises a solar farm and battery storage infrastructure located in the locality of Tallawang, NSW, approximately eight kilometres northwest of Gulgong.

If developed, Tallawang Solar Farm would involve the construction, operation, and maintenance of a 390MW solar farm on approximately 920-hectares. The energy storage infrastructure would have a capacity of up to 780 Mwh.

The solar farm would be connected to the Central West REZ, and feed into the National Electricity Market. It is anticipated that the solar farm could generate enough electricity to supply approximately 250,000 homes in NSW.

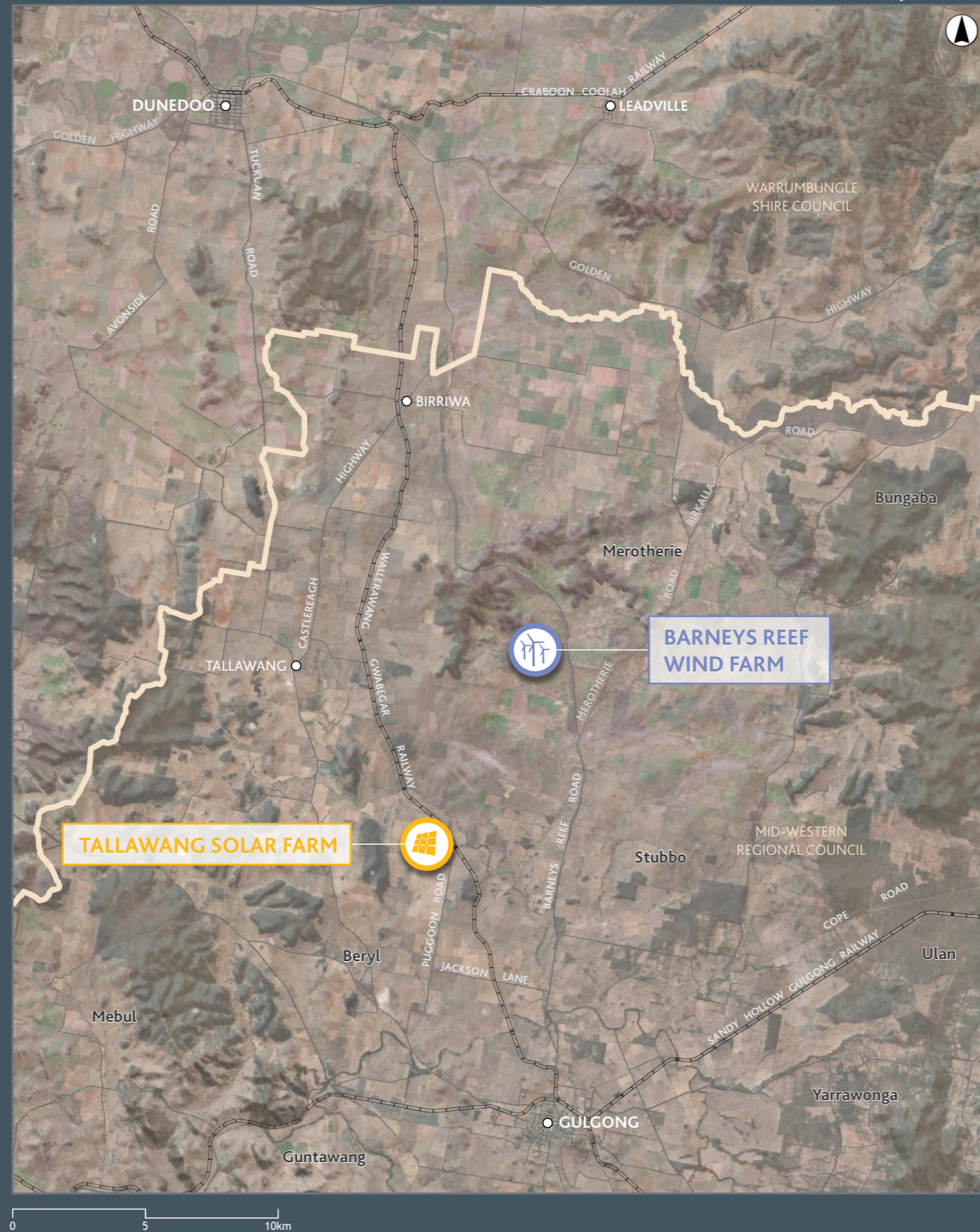
To date, RES has been meeting with landholders, with an agreement currently in place with the host landholders of the site. This has facilitated the progression of a number of environmental and social impact studies to determine the suitability of the site and locality to host the Project and progress its planning.

The Project would utilise bi-facial solar modules to generate energy from both the front and rear of the panels. Panels are likely be a maximum of 5 metres high and 10 metres apart, arranged in rows. This distance between rows allows for ongoing use of the land for grazing or existing agricultural activities.

To enable the transfer of energy, other relevant infrastructure will be positioned across the site, such as inverters, transformers, battery units etc., as well as a number of temporary (during construction) and permanent operational and maintenance buildings.



FIGURE 1



BARNEYS REEF WIND FARM

The proposed Barneys Reef Wind Farm is located approximately 15 kilometres north of Gulgong, in the Mid-Western Regional Council LGA. The town of Dunedoo is located approximately 18 km to the north of the site within the neighbouring Warrumbungle Shire Council area.

Barneys Reef Wind Farm will have a capacity of approximately 340MW and at this early stage of planning would likely include around 60 wind turbines. The proposed site extends over 13 free-hold properties of which RES has recently formed agreements with the host landholders. Barneys Reef Wind Farm is also expected to generate enough electricity to supply around 265,000 NSW homes.

Infrastructure on the site, may include two substations and transmission connections, which would enable connection of the proposed turbines to the Central-West Orana REZ Transmission Corridor. It is expected this would traverse the northern end of the Project Area.

As is the case with Tallawang Solar Farm, RES is currently undertaking a number of preliminary environmental and social studies to inform the detailed project design and feasibility for the proposed wind farm. These studies would support an improved understanding of the impacts and benefits of the Project on surrounding communities and on the local environment.

