



# Tallawang Solar Farm and Barneys Reef Wind Farm

Project Information Sheet No.2  
AUGUST 2021

This information sheet provides an update on the status of the Tallawang Solar Farm and Barneys Reef Wind Farm projects and a summary of key outcomes from the scoping phase as well as early-stage community and stakeholder engagement. It also provides an overview of next steps in the planning and assessment process and details on how you can be involved.

## PROJECT UPDATE

Between March and June 2021, the scoping phase for the Tallawang Solar Farm and Barneys Reef Wind Farm projects was completed, with the lodgment of the Scoping Report for each project to the NSW Department of Planning, Industry and Environment (DPIE) in July 2021. Both reports can be viewed online on the DPIE major projects website.

The Tallawang Solar Farm Scoping Report and information on the Project as it progresses can be accessed at: <https://www.planningportal.nsw.gov.au/major-projects/project/42311>

The Barneys Reef Wind Farm Scoping Report and information on the Project as it progresses can be accessed at: <https://www.planningportal.nsw.gov.au/major-projects/project/42351>

Early-stage community consultation and preliminary assessments undertaken over the past months have informed several refinements and updates to each of the projects as we work to ensure that the feedback provided from the local community and project stakeholders has input into the projects' planning and design.

## TALLAWANG SOLAR FARM

The proposed Tallawang Solar Farm comprises a solar farm, battery storage, transmission line structure and substation in the locality of Tallawang, NSW, approximately 8 km northwest of Gulgong.

If developed, the Tallawang Solar Farm would involve the construction, operation, and maintenance of a solar farm with energy storage infrastructure capacity of up to 1000 Mwh.

As project planning has progressed, some design elements have changed, including:

- An increase of the capacity to 500MW over a Project Area of 1,370 hectares
- Site access now via the Castlereagh Highway to improve traffic flow on local roads
- Indicative transmission line route of 11km to connect to the Barneys Reef substation.

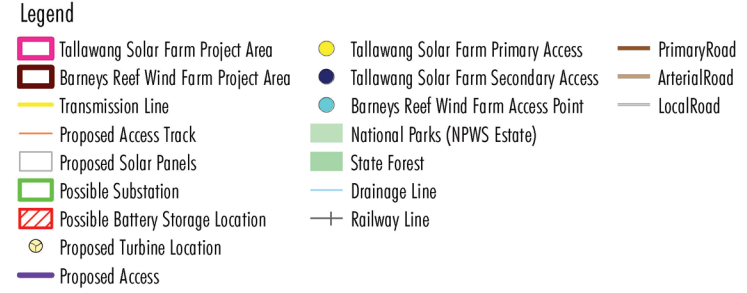
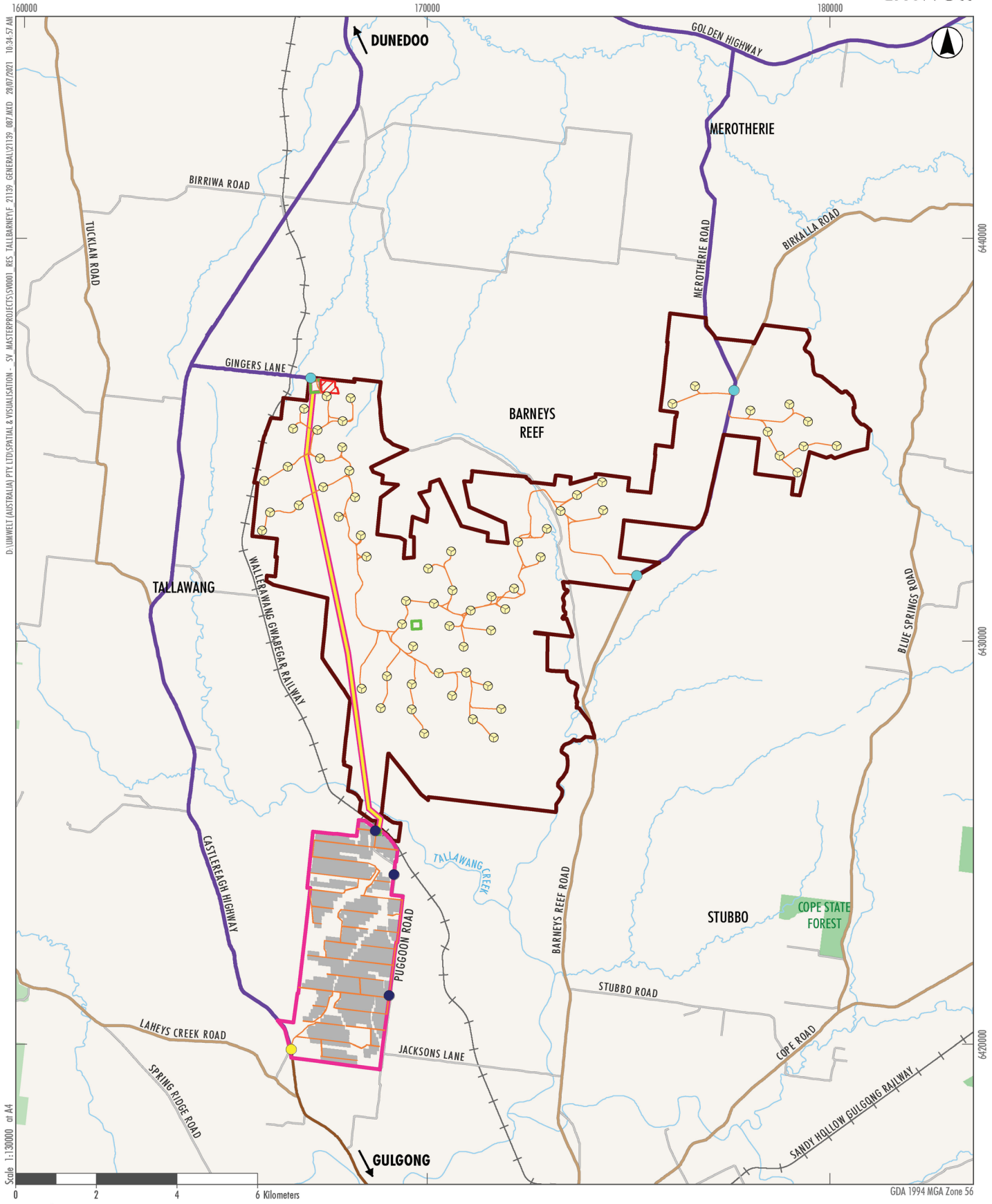
## BARNEYS REEF WIND FARM

The proposed Barneys Reef Wind Farm includes an estimated 63 wind turbines in the locality of Barneys Reef, NSW, approximately 12 km north of Gulgong and 18 km south of Dunedoo.

If developed, the Barneys Reef Wind Farm would include the construction and operations of the wind turbines, as well as battery storage, two substations, access roads and transmission line infrastructure.

As project planning has progressed, some design elements have also changed, including:

- An increase of the capacity to 441MW over a Project Area of 7,548 hectares
- Exclusion of the northern part of the reef zoned E3 Environmental Management from the Project Area
- An increase of turbine tip height to 280 metres.



**FIGURE 1.1**  
Site Context and Project Area

Image Source: Data source: Geoscience Australia; Forestry Corporation of NSW (2019); DSFI (2017); NPWS Estate (2019)

## WHAT WE HEARD

Over the past months, members of the RES project team accompanied by Umwelt's Social Impact Assessment consultants, have consulted with over 60 members of the community and nearby residents. This has allowed the teams to better understand your views, interests, concerns, and opportunities presented by the proposed projects. Issues and interests raised through these discussions are summarised in the following infographic and have informed the preliminary assessments that constituted the Scoping Report for each project. These matters will continue to be understood and investigated throughout the next phases of the projects' planning and assessment process.

## THE PROJECTS



## WHERE ARE WE IN THE PLANNING AND ASSESSMENT PROCESS?

Both projects are being assessed under the NSW State Significant Development planning process, an outline of which is presented in **Figure 2**.

Following the recent lodgment of both Scoping Reports for the Tallawang Solar Farm and the Barneys Reef Wind Farm, the Secretary's Environmental Assessment Requirements (SEARs) will inform the preparation of two detailed Environmental Impact Statements (EIS) and a Social Impact Assessment (SIA) for each project (in alignment with the DPIE SIA Guideline, 2021). These studies will be prepared by **Umwelt Social & Environmental Consultants**.

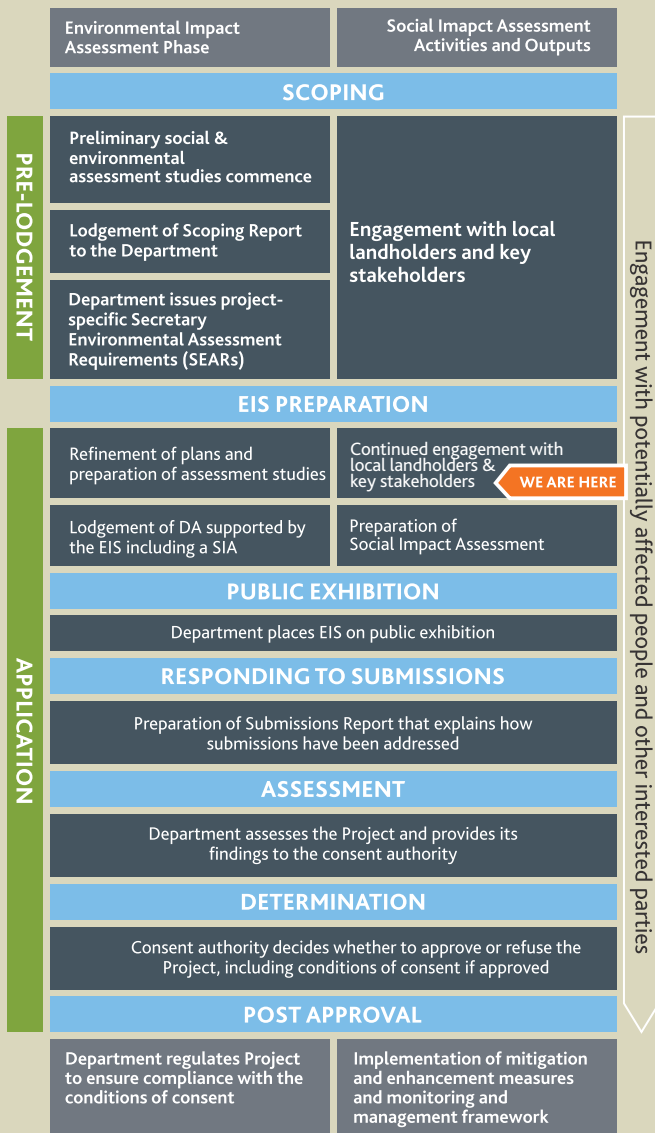


FIGURE 2: NSW DPIE Environmental and Social Impact Assessment process

The SIA program for each project includes further community consultation, the second round of which has recently commenced and will continue over the coming months. Community consultation will continue to provide opportunities for local community members and others with an interest in either project to provide feedback on their views, concerns, or interests and suggestions of ways in which project related impacts can be best managed and opportunities can be enhanced. This will assist the EIS in responding to the effects of the projects and will support the identification of further refinements should they be required. The community consultation and stakeholder engagement program for the two projects is planned to be undertaken concurrently due to the proximity of the projects.

*The EISs and SIAs for both the Tallawang Solar Farm and the Barneys Reef Wind Farm intend to be lodged in the fourth quarter (Q4) of 2021.*

## HOW TO GET INVOLVED

RES and Umwelt will shortly be contacting those consulted during the scoping phase as well as additional community members, local groups, and stakeholders to invite your participation in this next phase of the projects.

### YOU CAN PARTICIPATE VIA THE FOLLOWING MEANS:



INDIVIDUAL OR GROUP MEETINGS



COMMUNITY INFORMATION SESSIONS



HOTLINE OR EMAIL



FEEDBACK SURVEY VIA THE PROJECTS' WEBSITE

*RES will be hosting two community information sessions on the 9th and 10th September 2021 in Gulgong and Dunedoo. We encourage you to register your interest to provide you with further detail closer to the date and to notify you of any changes due to the current COVID-19 restrictions in NSW.*

*We look forward to your ongoing participation and involvement.*

### REGISTER YOUR INTEREST



Free phone number: **1800 118 737**



**Barneys Reef Wind Farm Project:**  
[www.barneysreef-renewableenergy.com](http://www.barneysreef-renewableenergy.com)



**Email:**  
[info@barneysreef-renewableenergy.com](mailto:info@barneysreef-renewableenergy.com)



**Tallawang Solar Farm Project:**  
[www.tallawang-renewableenergy.com](http://www.tallawang-renewableenergy.com)



**Email:**  
[info@tallawang-renewableenergy.com](mailto:info@tallawang-renewableenergy.com)

**Chris Gosling**  
Senior Project Development Manager  
RES Australia Pty Limited

