



RES

Tallawang Solar Farm and Barneys Reef Wind Farm

Information Sheet No.3
FEBRUARY 2022

RES are pleased to provide an update of the environmental and social impact assessment studies undertaken throughout 2021 and 2022 to inform the development of Environmental Impact Statements (EISs) for two renewable energy projects proposed between Gulgong and Dunedoo: the Tallawang Solar Farm Project and the Barneys Reef Wind Farm Project.

An EIS for each Project is expected to be finalised in the first half of 2022, at which point a formal assessment of the Project's will be undertaken by the Department of Industry, Planning and Environment (DPIE).

COMMUNITY INFORMATION SESSIONS

We would like to take this opportunity to thank everyone who has provided feedback on the proposed Projects to date. Community and stakeholder engagement has been ongoing since March 2021 for both Projects and has involved engagement with over 160 stakeholders, including nearby neighbours, local community and environmental groups, service providers, local council representatives and members of the broader community.

To obtain further feedback from the community, RES will be hosting two drop-in information sessions at the local Dunedoo and Gulgong Shows, as well as one online information session in late February to:

- Update interested members of the community on Project progress
- Obtain further feedback on predicted Project impacts
- Present proposed management measures
- Discuss ideas for how these Projects can provide lasting benefit to Gulgong, Dunedoo and surrounds

Information provided at the information sessions will be posted on our Project website. Please check in regularly for these and other updates (see overleaf for website links).

DUNEDOO SHOW

Wargundy Street
Saturday 12 February
Drop-in 9am-5pm

GULGONG SHOW

Guntawang Street
Saturday 19 February
Drop-in 9am-5pm

ONLINE INFORMATION SESSION

Wednesday 23 February
6pm-7.30pm
to register please visit

<http://www.barneysreef-renewableenergy.com/have-your-say/>

or scan the QR code and enter your contact details. You will be sent a meeting invitation closer to the event.



PROJECT IMPACTS



Figure 1: Perceived Social Impacts

WHAT YOU TOLD US

During community consultations, the continued economic sustainability of Gulgong and Dunedoo communities was the most frequently raised concern associated with both Projects. Employment generation and a boost to the local economy were identified as positive impacts, however stakeholders would like to see benefits shared equally between Gulgong and Dunedoo communities, via a community benefit sharing scheme, school-based partnership programs and structured opportunities for local workers to specialise, re-skill or upskill.

Concerns regarding changes to the aesthetic and social values of the rural landscape were frequently raised, particularly the cumulative visual impacts of proposed or existing developments within the mining, transport and renewable energy sectors seen to be industrialising the landscape and competing with agricultural land uses.

Concerns relating to community engagement and decision-making systems and access to services (largely associated with the influx of project workforces creating pressures on accommodation provision) were also frequently raised as impacts of the Projects.

There were several stakeholders consulted who did not have any concerns in relation to the Projects, and instead welcomed the positive contribution that the Projects may bring to the community.

DIFFERING STAKEHOLDER GROUPS CONSULTED HELD VARYING VIEWS REGARDING THE TWO PROJECTS:



Concerns for visual amenity changes were raised most frequently by neighbouring landholders, service providers and local businesses.



Concerns regarding the potential effect of the Project on personal property values were raised predominantly by neighbouring landholders and community groups.



Service providers, businesses and community groups most frequently raised the importance of economic sustainability of their local communities and towns, indicating a need to ensure that local communities realise benefits from the Projects in ways that promote continued social and economic stability.



Community groups frequently raised concerns relating to potential ecological and environmental impacts, the Project's community engagement and decision-making processes and concerns for potential cumulative impacts.



PROPOSED PROJECT DESIGN CHANGES

Throughout the engagement process, we have received valuable feedback on each Project which has resulted in material changes to the Project designs.

TALLAWANG SOLAR FARM

PROJECT DESCRIPTION:

The proposed Tallawang Solar Farm comprises a solar farm, battery storage, transmission line structure and substation on 1,370ha in the locality of Tallawang, NSW, approximately 8 km northwest of Gulgong.

If approved, the Tallawang Solar Farm will involve the construction, operation, and maintenance of a 500MW capacity solar farm with an energy storage capacity of up to 1000 Mwh.

DESIGN CHANGES:

- Site access now proposed via the Castlereagh Highway, rather than Puggoon Road, to improve traffic flow on local roads.
- Western site boundary moved to avoid disturbance to dense vegetation and to reduce visibility from the Castlereagh Highway.
- Realignment of 11 km transmission line route to connect to a shared switching station.
- Excludes farm dams, creeks and drainage lines, Registered Aboriginal and heritage sites, and large patches of vegetation where possible.
- Avoidance of heavy vehicle traffic through Gulgong township.
- Inclusion of 150-200m set back distances from dwellings.

BARNEYS REEF WIND FARM

PROJECT DESCRIPTION:

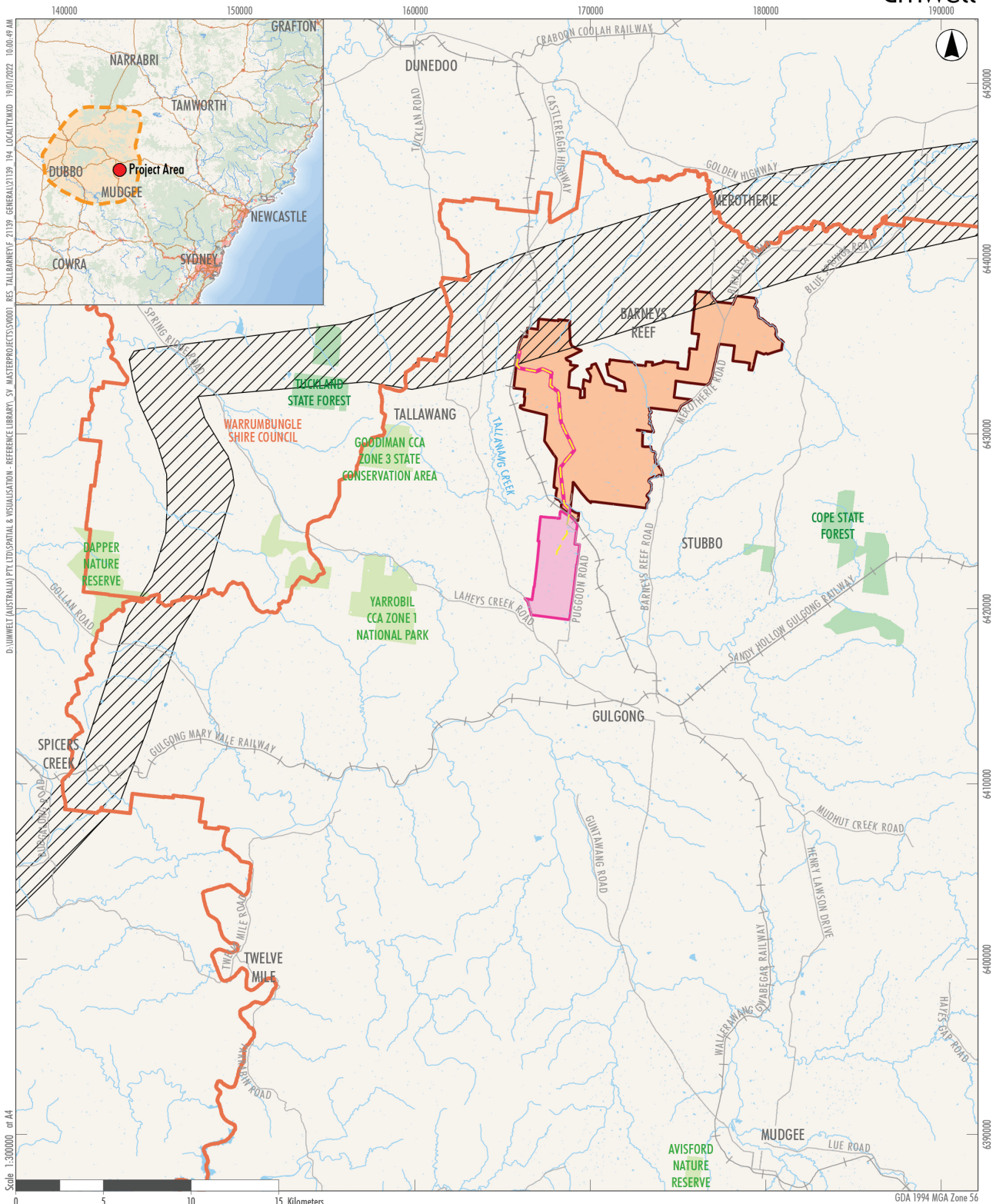
The proposed Barneys Reef Wind Farm includes up to 67 wind turbines placed throughout 7,548 ha of land in the locality of Barneys Reef, NSW, approximately 12 km north of Gulgong and 18 km south of Dunedoo.

If approved, the Barneys Reef Wind Farm will include the construction and operation of the wind turbines, as well as battery storage, one substation, access roads, underground cabling and overhead transmission line infrastructure.

DESIGN CHANGES:

- Exclusion of land zoned E3 Environmental Management in the northern Project Area.
- A minimum turbine setback of 2 km from residences.
- Transmission line (for both Projects) shifted further east from residences identified as having moderate to high visual impacts.
- Avoidance of disturbance to Registered Aboriginal sites.
- Avoidance of heavy vehicle traffic through Gulgong township.





- Legend**
- Tallawang Solar Farm Project Area
 - Barneys Reef Wind Farm Project Area
 - Proposed HV Powerline
 - Local Government Area Boundary
 - Proposed Central West Orana REZ Transmission Corridor
 - Indicative Central-West Orana Renewable Energy Zone
 - National Parks (NPWS Estate)
 - State Forest
 - Road
 - Drainage Line
 - Railway Line

FIGURE 1.1
Locality Plan

Image Source: Data source: Geoscience Australia; Forestry Corporation of NSW (2019); NPWS Estate (2019)

CONTACT THE TEAM

Free phone number: **1800 118 737**

Barneys Reef Wind Farm Project: www.barneysreef-renewableenergy.com
Email: info@barneysreef-renewableenergy.com

Tallawang Solar Farm Project: www.tallawang-renewableenergy.com
Email: info@tallawang-renewableenergy.com

Chris Gosling
Senior Project Development Manager
RES Australia Pty Limited

